

# Nordic Industrial Park

**March 25, 2015**

# Ningbo - Introduction

- **Ningbo is a modern, vibrant and fast growing city with a total population of 7.63 million people in the Ningbo Municipality including 2.26 million in Ningbo City.**
- **Ningbo has a longstanding tradition of international trade and entrepreneurship.**
- **Ningbo offers a diversified industrial base with a qualified and skilled labor market.**
- **Hangzhou Bay Bridge: 36 kilometers long (Opened on May 1, 2008).**
  - Driving distance between Ningbo City and Shanghai Pudong Airport is 2 ½ hours by car.
  - Driving distance between Ningbo City and Shanghai is 2 ½ - 3 hours by car, bus and train.
- **Ningbo Lishe Airport: 30 minutes drive from downtown Ningbo.**
  - Domestic flights to all the major cities of mainland China and international flights to Hong Kong, Macau, Taipei, Bangkok, Singapore and Cambodia.
- **Ningbo Port (End 2012): 25 kilometers from NIP.**
  - Mainland China's 3<sup>rd</sup> largest in cargo tonnage (496 million tons) and the world's 4<sup>th</sup> largest.
  - Mainland China's 3<sup>rd</sup> largest in container volume (16.77 million TEU) and the world's 6<sup>th</sup> largest.

# NIP - Location



- NIP is located in the Zhenhai district of Ningbo Municipality only 30 minutes drive from the city center. The Ningbo Subway currently under construction, with a planned subway station opening at NIP in late 2015, will make Ningbo even more accessible.
- Access to the inner ring-road system is just one kilometer away from NIP with direct access to Ningbo City. The outer ring-road system is two kilometers away with direct access to the highway system connecting Ningbo to Hangzhou and Shanghai.

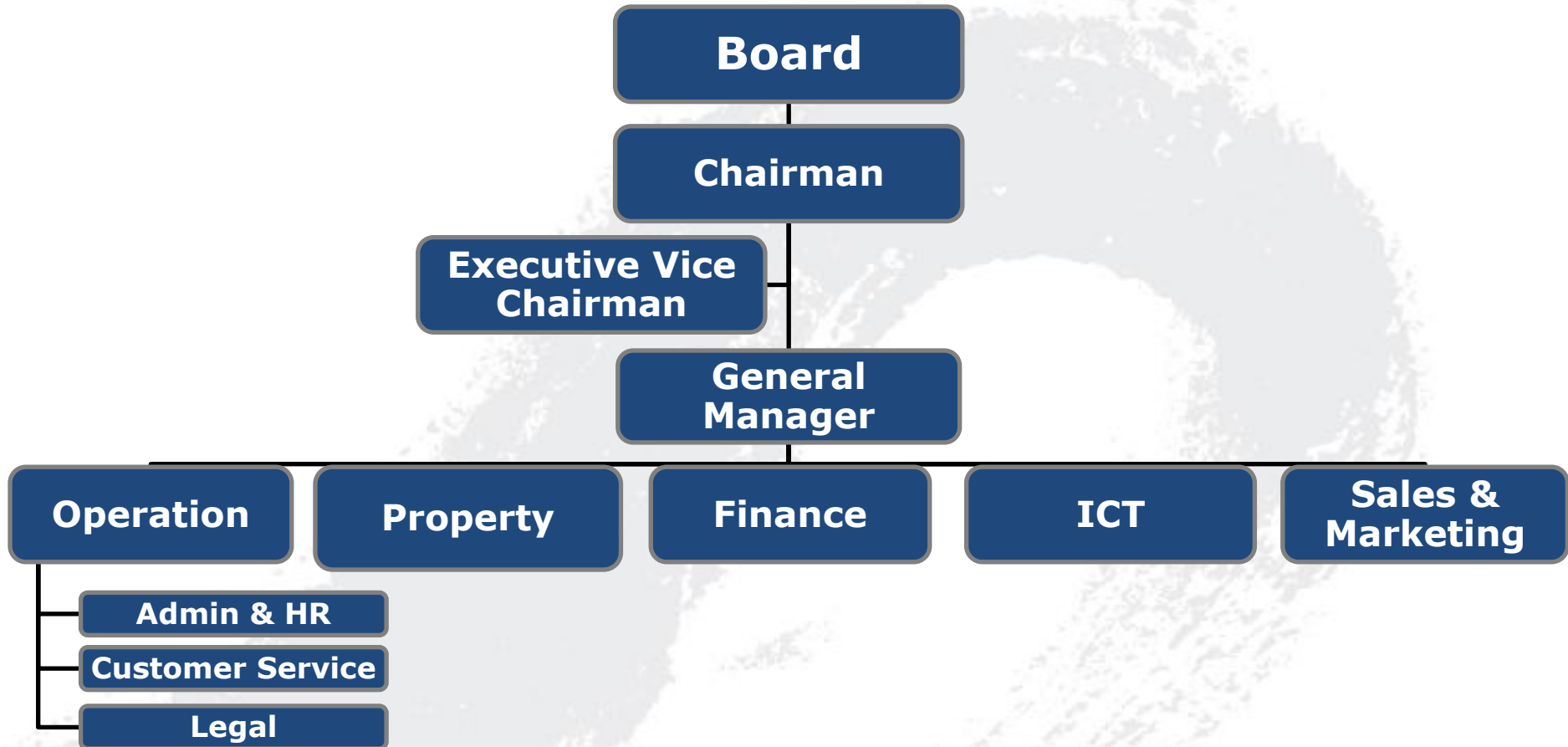
# Ningbo - Surroundings



# About Us - Presentation

- **Nordic Industrial Park Co., Ltd. (NIP) is one of the first wholly foreign-owned and operated industrial & business Parks in China that was registered on September 9, 2002 but began full operations in early 2004.**
- **Silver Rise Hong Kong Pte. Ltd. ([www.kingmayer.com](http://www.kingmayer.com)) has completed the acquisition of NIP from the previous Norwegian owner in August 2013. Yinmao Group is the main shareholder of Silver Rise and it involves in concrete pipe manufacturing, steel pipe manufacturing, landscaping, real estate and international trading.**
- **Being a full service and facility provider, we understand that the key to our clients' success is not alone to understand our own business. It is to understand yours.**
- **NIP presents a dedicated management team with international experience and know-how in combination with local expertise and insight.**
- **Working with NIP means entering a partnership in which we will not only give you advice but also give you our opinion.**

# About Us - Organization Chart



# Facilities - Introduction

Aerial photo of NIP  
- October 2012



- **Total land area of 282,000 m<sup>2</sup> (approx. 435 mu ) with a total floor area of gross 180,000 m<sup>2</sup>.**

# Facilities - Surroundings



- **We believe people perform better if they work in inspiring surroundings. That is why we not only have a strong focus on the layout of our facilities.**
- **In NIP, you will find beautifully designed park areas offering a perfect spot for a brief talk, a short break or just a thoughtful stroll. Factors that will make your team perform just that little bit better.**

# Facilities - Production & Assembly

- **NIP provides fully decorated, prepared and ready-to-use production and assembly facilities based on high-quality standards according to NIP standard.**
- **The production facilities are built for heavier manufacturing and engineering purposes while the assembly facilities are built for light production, assembly and logistic use.**
- **All facilities are delivered with the utilities connected, infrastructure, parking areas, fences, greenery, 24 hour guard service and night patrolling.**
- **Please visit [www.nip.com.cn](http://www.nip.com.cn) for a full listing of available facilities from which you can download the relevant building prospectus with photos, drawings and general standard building specifications.**

# Facilities - Production & Assembly



# Facilities - Offices



- **The NIP Business Center is a Grade A office facility consisting of four office blocks.**
- **The office layout is flexible and functional with the interior exhibiting the best of Scandinavian design – light and minimalistic based on natural and sustainable materials such as bamboo, wood, stone and glass.**
- **Shared facilities include cafeteria serving Chinese and Western meals, VIP rooms, conference room, meeting rooms, business lounge, videoconference equipment, outdoor and underground parking, landscape garden and greenery.**

# Facilities - Offices



# Facilities - Amenities



# Facilities - Availability



# Clients – List (Part)

- 
1. AH Industries (Denmark)
  2. Ålö (Sweden)
  3. Atlas Incinerators (Denmark)
  4. Bauer Nilsen (Norway)
  5. Bunting Magnetics (USA)
  6. Den-Jet (Denmark)
  7. Direct Sourcing/Auhan (Australia)
  8. Euramco Safety (USA)
  9. Hagens Spring (Denmark)
  10. Hentech Solutions (Denmark)
  11. Hörle Automatic (Sweden)
  12. Invactor (Denmark)
  13. Kitron Electromechanical (Norway)
  14. Kitron Electronics (Norway)
  15. Leda Security Products (Australia)
  16. Lemvigh-Müller (Denmark)
  17. Logitrans (Denmark)
  18. Marco Catering Equipment (Ireland)
  19. Marco Lift (Sweden)
  20. Marine Aluminium (Norway)
  21. Mascot (Norway)
  22. Mita Teknik (Denmark)
  23. Mobile Climate Control/MCC (Sweden)
  24. NCO (Denmark)
  25. Neorem Magnets (Finland)
  26. Næsby Maskinfabrik/NMF (Denmark)
  27. Rimaster (Sweden)
  28. RMG Steel (Denmark)
  29. Roplan (Sweden)
  30. Scansafe (Norway)
  31. Tajco (Denmark)
  32. Ulstein Marine Equipment (Norway)
  33. Union Engineering (Denmark)

March 2015

# Contact - Information



**[www.nip.com.cn](http://www.nip.com.cn)**

## **Nordic Industrial Park**

No. 89 Jinchuan Road

Zhenhai, Ningbo 315221

P.R. China

Phone: +86 574 8630 8822

Fax: +86 574 8630 6792

E-mail: [info@nip.com.cn](mailto:info@nip.com.cn)

宁波北欧工业园区

中国宁波市镇海区 金川路89号

邮编: 315221